

BID TABULATION FOR:

CONSTRUCTION OF THE PHASE 2 CLEARING AND GRUBBING TO SERVE FAULKNER RIDGE

BID OPENING DATE:**BID OPENING LOCATION:****TABULATION BY:****TABULATION DATE:****LJA JOB NO.**

MONTGOMERY COUNTY MUNICIPAL UTILITY DISTRICT NO. 251

MONTGOMERY COUNTY, TEXAS

AUGUST 07, 2025

LJA ENGINEERING, INC.

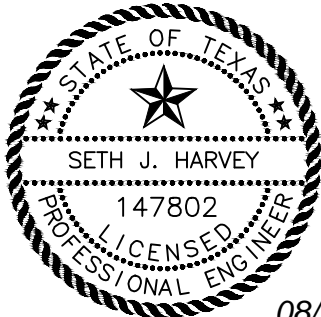
E, MURPHY

AUGUST 07, 2025

0389-0001B (9.2)

BIDDER NAME	BASE BID	ALTERNATE ITEM NO. 1
		PLUS BASE BID
1) AMERIPRIDE CONSTRUCTION LLC	\$599,200.00	\$1,017,300.00
2) PLD CONSTRUCTION, LLC	\$737,525.00	\$1,181,050.00
3) S & J EXCAVATION LLC	\$842,250.00	\$1,661,500.00
4) CARLSON MCCLAIN CONSTRUCTION COMPANY LLC	\$937,300.00	\$1,507,950.00
5) DC CONTRACTING SERVICES, LLC	\$991,599.00	\$1,305,174.00

CALENDAR DAYS - 40/50



08/07/2025

I, Seth Harvey, PE, hereby certify these bid tabulations to be true and correct.

BID TABULATION FOR:

BID OPENING DATE:
BID OPENING LOCATION:
TABULATION BY:
TABULATION DATE:
LJA JOB NO.

CONSTRUCTION OF THE PHASE 2 CLEARING AND GRUBBING TO SERVE FAULKNER RIDGE

MONTGOMERY COUNTY MUNICIPAL UTILITY DISTRICT NO. 251
MONTGOMERY COUNTY, TEXAS
AUGUST 07, 2025
LJA ENGINEERING, INC.
E, MURPHY
AUGUST 07, 2025
0389-0001B (9.2)

				1) AMERIPRIDE CONSTRUCTION LLC		2) PLD CONSTRUCTION, LLC		3) S & J EXCAVATION LLC		4) CARLSON MCCLAIN CONSTRUCTION COMPANY LLC	
NO.	ITEM DESCRIPTION	UNIT	QTY	UNIT COST	TOTAL	UNIT COST	TOTAL	UNIT COST	TOTAL	UNIT COST	TOTAL
BASE BID CLEARING AND GRUBBING ITEMS											
1.	CLEARING AND GRUBBING, INCLUDES ROOT RAKING AND BACK DRAGGING, COMPLETE IN PLACE	AC	113	\$3,100.00	\$350,300.00	\$3,500.00	\$395,500.00	\$5,800.00	\$655,400.00	\$5,500.00	\$621,500.00
2.	ONSITE BURNING OF CLEARED AND GRUBBED MATERIAL, INCLUDES NECESSARY PERMITS, EXCAVATION OF BURN PIT, BURN PIT CLEANOUT, REMOVE AND OFFSITE DISPOSAL OF ASH AND UNSUITABLE MATERIAL, PLACEMENT AND COMPACTION TO 95% STANDARD PROCTOR DENSITY, WITH MAXIMUM 8" LIFTS, COMPLETE IN PLACE	AC	113	\$500.00	\$56,500.00	\$275.00	\$31,075.00	\$250.00	\$28,250.00	\$450.00	\$50,850.00
3.	REMOVAL AND OFFSITE DISPOSAL OF EXISTING FENCE WITHIN CLEARING LIMITS, COMPLETE IN PLACE	LF	11000	\$1.25	\$13,750.00	\$2.00	\$22,000.00	\$1.00	\$11,000.00	\$4.00	\$44,000.00
4.	REMOVAL AND OFFSITE DISPOSAL OF EXISTING STRUCTURE, APPROXIMATELY 5,000 SQUARE FEET, INCLUDES REMOVAL OF STRUCTURE, FOUNDATIONS, SEPTIC, DRIVEWAY, ETC, COMPLETE IN PLACE	EA	1	\$5,000.00	\$5,000.00	\$40,000.00	\$40,000.00	\$28,000.00	\$28,000.00	\$35,000.00	\$35,000.00
5.	REMOVAL AND OFFSITE DISPOSAL OF EXISTING STRUCTURE, APPROXIMATELY 3,200 SQUARE FEET, INCLUDES REMOVAL OF STRUCTURE, FOUNDATIONS, SEPTIC, DRIVEWAY, ETC, COMPLETE IN PLACE	EA	1	\$3,500.00	\$3,500.00	\$25,000.00	\$25,000.00	\$8,000.00	\$8,000.00	\$20,000.00	\$20,000.00
6.	REMOVAL AND OFFSITE DISPOSAL OF EXISTING ROCK DRIVEWAY WITHIN CLEARING LIMITS, COMPLETE IN PLACE	LF	1000	\$2.00	\$2,000.00	\$20.00	\$20,000.00	\$8.00	\$8,000.00	\$15.00	\$15,000.00
7.	EXCAVATION AND EMBANKMENT OF SEDIMENTATION BASIN A, INCLUDES SPREADING OF SPOILS, BERMING AND COMPACTING SPOILS ON SITE, COMPLETE IN PLACE	CY	7500	\$4.05	\$30,375.00	\$6.50	\$48,750.00	\$4.00	\$30,000.00	\$5.00	\$37,500.00
8.	SEDIMENTATION BASIN TRAP AND OUTLET FOR SEDIMENTATION BASIN A, INCLUDES PERFORATED CORRUGATED METAL RISER PIPE, ANTI-VORTEX DEVICE, ANCHOR PLATE AND OUTLET PIPE, COMPLETE IN PLACE	EA	1	\$13,500.00	\$13,500.00	\$20,000.00	\$20,000.00	\$9,800.00	\$9,800.00	\$10,500.00	\$10,500.00
9.	EXCAVATION AND GRADING OF DRAINAGE SWALE, 4:1 MINIMUM SIDE SLOPE - V-BOTTOM, (2'-4' DEPTHS), INCLUDES HAULING OF SPOIL MATERIAL, STRIPPING, STOCKPILING STRIPPINGS, PLACEMENT AND COMPACTION TO 95% STANDARD PROCTOR DENSITY, WITH MAXIMUM 8" LIFTS, AND RE-APPLICATION OF STRIPPINGS, COMPLETE IN PLACE	LF	850	\$2.50	\$2,125.00	\$7.00	\$5,950.00	\$4.00	\$3,400.00	\$4.00	\$3,400.00
10.	TURF ESTABLISHMENT OF SEDIMENTATION BASIN AND SWALES, INCLUDES SEEDING, MOWING AND WATERING TO ACHIEVE 90% HOMOGENOUS VEGETATION TO ACCEPT PROJECT FOR FINAL PAYMENT, COMPLETE IN PLACE	AC	2	\$900.00	\$1,800.00	\$850.00	\$1,700.00	\$3,500.00	\$7,000.00	\$3,500.00	\$7,000.00
11.	TURF ESTABLISHMENT OF CLEARED AREAS, INCLUDES SEEDING, MOWING AND WATERING TO ACHIEVE 90% HOMOGENOUS VEGETATION TO ACCEPT PROJECT FOR FINAL PAYMENT, COMPLETE IN PLACE	AC	113	\$900.00	\$101,700.00	\$850.00	\$96,050.00	\$100.00	\$11,300.00	\$300.00	\$33,900.00
12.	INSTALL, MAINTAIN, AND REMOVE ROCK FILTER DAM, TYPE 2, COMPLETE IN PLACE	EA	3	\$1,750.00	\$5,250.00	\$2,500.00	\$7,500.00	\$1,800.00	\$5,400.00	\$500.00	\$1,500.00
13.	REMOVAL AND OFFSITE DISPOSAL OF EXISTING OVERHEAD ELECTRIC, INCLUDES REMOVAL OF POLES, POWER LINE, TRANSFORMER, METERS, COORDINATION WITH SAM HOUSTON ELECTRICAL CO-OP, COMPLETE IN PLACE	LF	1500	\$0.50	\$750.00	\$5.00	\$7,500.00	\$18.00	\$27,000.00	\$11.00	\$16,500.00
SUBTOTAL BASE BID CLEARING AND GRUBBING ITEMS				\$586,550.00		\$721,025.00		\$832,550.00		\$896,650.00	

BASE BID MISCELLANEOUS ITEMS

BID TABULATION FOR:

BID OPENING DATE:
BID OPENING LOCATION:
TABULATION BY:
TABULATION DATE:
LJA JOB NO.

CONSTRUCTION OF THE PHASE 2 CLEARING AND GRUBBING TO SERVE FAULKNER RIDGE

MONTGOMERY COUNTY MUNICIPAL UTILITY DISTRICT NO. 251
MONTGOMERY COUNTY, TEXAS
AUGUST 07, 2025
LJA ENGINEERING, INC.
E, MURPHY
AUGUST 07, 2025
0389-0001B (9.2)

				1) AMERIPRIDE CONSTRUCTION LLC		2) PLD CONSTRUCTION, LLC		3) S & J EXCAVATION LLC		4) CARLSON MCCLAIN CONSTRUCTION COMPANY LLC	
NO.	ITEM DESCRIPTION	UNIT	QTY	UNIT COST	TOTAL	UNIT COST	TOTAL	UNIT COST	TOTAL	UNIT COST	TOTAL
1.	INSTALL, MAINTAIN, AND REMOVE REINFORCED FILTER FABRIC FENCE (SILT BARRIER FENCING), COMPLETE IN PLACE	LF	100	\$1.50	\$150.00	\$5.00	\$500.00	\$1.50	\$150.00	\$1.50	\$150.00
2.	INSTALL, MAINTAIN, AND REMOVE STABILIZED CONSTRUCTION EXIT, AND REGRADE AREA TO MATCH FINISHED GRADE, COMPLETE IN PLACE	EA	1	\$3,000.00	\$3,000.00	\$2,500.00	\$2,500.00	\$2,500.00	\$2,500.00	\$3,500.00	\$3,500.00
3.	STORMWATER POLLUTION PREVENTION PLAN COMPLIANCE, INCLUDES CONTRACTOR'S BOOKLET, NOI AND NOT, COMPLETE IN PLACE	LS	1	\$2,500.00	\$2,500.00	\$1,500.00	\$1,500.00	\$800.00	\$800.00	\$7,500.00	\$7,500.00
4.	DEWATERING (GROUNDWATER CONTROL) TO COMPLETE THE CONSTRUCTION OF THE SEDIMENTATION BASIN AND SWALES, INCLUDES CONVENTIONAL ACUUM-TYPE WELL POINTS, INTERNAL SUMPS AND PUMPS OR ANY TIME OF PUMPING NECESSARY TO COMPLETE THE CONSTRUCTION OF THE PROJECT, TO BE USED AT THE WRITTEN DIRECTION OF THE ENGINEER, COMPLETE IN PLACE	AC	2	\$2,500.00	\$5,000.00	\$2,500.00	\$5,000.00	\$100.00	\$200.00	\$5,000.00	\$10,000.00
5.	SURFACE WATER CONTROL, INCLUDES PUMPING REQUIRED TO COMPLETE THE CONSTRUCTION OF THE PROJECT, TO BE USED AT THE WRITTEN DIRECTION OF THE ENGINEER, COMPLETE IN PLACE	LS	1	\$500.00	\$500.00	\$5,000.00	\$5,000.00	\$5,000.00	\$5,000.00	\$10,000.00	\$10,000.00
6.	TEMPORARY TRAFFIC CONTROL PLAN, COMPLETE IN PLACE	LS	1	\$1,000.00	\$1,000.00	\$1,500.00	\$1,500.00	\$800.00	\$800.00	\$5,000.00	\$5,000.00
7.	INSTALL, MAINTAIN AND REMOVE CONCRETE TRUCK WASHOUT AREA, COMPLETE IN PLACE	LS	1	\$500.00	\$500.00	\$500.00	\$500.00	\$250.00	\$250.00	\$4,500.00	\$4,500.00
SUBTOTAL BASE BID MISCELLANEOUS ITEMS					\$12,650.00		\$16,500.00		\$9,700.00		\$40,650.00
ALTERNATE ITEM NO. 1 CLEARING AND GRUBBING ITEMS											
1.	CHIPPING AND OFFSITE DISPOSAL OF CLEARED AND GRUBBED MATERIAL, IN LIEU OF CLEARING AND GRUBBING ITEM NO. 2, COMPLETE IN PLACE	AC	113	\$4,200.00	\$474,600.00	\$4,200.00	\$474,600.00	\$7,500.00	\$847,500.00	\$5,500.00	\$621,500.00
SUBTOTAL ALTERNATE ITEM NO. 1 CLEARING AND GRUBBING ITEMS					\$474,600.00		\$474,600.00		\$847,500.00		\$621,500.00
BID SUMMARY											
BASE BID CLEARING AND GRUBBING ITEMS					\$586,550.00		\$721,025.00		\$832,550.00		\$896,650.00
BASE BID MISCELLANEOUS ITEMS					\$12,650.00		\$16,500.00		\$9,700.00		\$40,650.00
TOTAL AMOUNT BASE BID					\$599,200.00		\$737,525.00		\$842,250.00		\$937,300.00
ALTERNATE ITEM NO. 1											
TOTAL AMOUNT BASE BID					\$599,200.00		\$737,525.00		\$842,250.00		\$937,300.00
DEDUCT CLEARING AND GRUBBING ITEMS ITEM NO. 2					-\$56,500.00		-\$31,075.00		-\$28,250.00		-\$50,850.00
CLEARING AND GRUBBING ITEMS					\$474,600.00		\$474,600.00		\$847,500.00		\$621,500.00
TOTAL ALTERNATE ITEM NO. 1 PLUS BASE BID					\$1,017,300.00		\$1,181,050.00		\$1,661,500.00		\$1,507,950.00

BID TABULATION FOR:

CONSTRUCTION OF THE PHASE 2 CLEARING AND GRUBBING TO SERVE FAULKNER RIDGE

BID OPENING DATE:
BID OPENING LOCATION:
TABULATION BY:
TABULATION DATE:
LJA JOB NO.

MONTGOMERY COUNTY MUNICIPAL UTILITY DISTRICT NO. 251
MONTGOMERY COUNTY, TEXAS
AUGUST 07, 2025
LJA ENGINEERING, INC.
E, MURPHY
AUGUST 07, 2025
0389-0001B (9.2)

				5) DC CONTRACTING SERVICES, LLC	
NO.	ITEM DESCRIPTION	UNIT	QTY	UNIT COST	TOTAL
BASE BID CLEARING AND GRUBBING ITEMS					
1.	CLEARING AND GRUBBING, INCLUDES ROOT RAKING AND BACK DRAGGING, COMPLETE IN PLACE	AC	113	\$4,720.00	\$533,360.00
2.	ONSITE BURNING OF CLEARED AND GRUBBED MATERIAL, INCLUDES NECESSARY PERMITS, EXCAVATION OF BURN PIT, BURN PIT CLEANOUT, REMOVE AND OFFSITE DISPOSAL OF ASH AND UNSUITABLE MATERIAL, PLACEMENT AND COMPACTION TO 95% STANDARD PROCTOR DENSITY, WITH MAXIMUM 8" LIFTS, COMPLETE IN PLACE	AC	113	\$1,975.00	\$223,175.00
3.	REMOVAL AND OFFSITE DISPOSAL OF EXISTING FENCE WITHIN CLEARING LIMITS, COMPLETE IN PLACE	LF	11000	\$0.60	\$6,600.00
4.	REMOVAL AND OFFSITE DISPOSAL OF EXISTING STRUCTURE, APPROXIMATELY 5,000 SQUARE FEET, INCLUDES REMOVAL OF STRUCTURE, FOUNDATIONS, SEPTIC, DRIVEWAY, ETC, COMPLETE IN PLACE	EA	1	\$17,173.00	\$17,173.00
5.	REMOVAL AND OFFSITE DISPOSAL OF EXISTING STRUCTURE, APPROXIMATELY 3,200 SQUARE FEET, INCLUDES REMOVAL OF STRUCTURE, FOUNDATIONS, SEPTIC, DRIVEWAY, ETC, COMPLETE IN PLACE	EA	1	\$10,991.00	\$10,991.00
6.	REMOVAL AND OFFSITE DISPOSAL OF EXISTING ROCK DRIVEWAY WITHIN CLEARING LIMITS, COMPLETE IN PLACE	LF	1000	\$1.00	\$1,000.00
7.	EXCAVATION AND EMBANKMENT OF SEDIMENTATION BASIN A, INCLUDES SPREADING OF SPOILS, BERMING AND COMPACTING SPOILS ON SITE, COMPLETE IN PLACE	CY	7500	\$9.50	\$71,250.00
8.	SEDIMENTATION BASIN TRAP AND OUTLET FOR SEDIMENTATION BASIN A, INCLUDES PERFORATED CORRUGATED METAL RISER PIPE, ANTI-VORTEX DEVICE, ANCHOR PLATE AND OUTLET PIPE, COMPLETE IN PLACE	EA	1	\$9,500.00	\$9,500.00
9.	EXCAVATION AND GRADING OF DRAINAGE SWALE, 4:1 MINIMUM SIDE SLOPE - V-BOTTOM, (2'-4' DEPTHS), INCLUDES HAULING OF SPOIL MATERIAL, STRIPPING, STOCKPILING STRIPPINGS, PLACEMENT AND COMPACTION TO 95% STANDARD PROCTOR DENSITY, WITH MAXIMUM 8" LIFTS, AND RE-APPLICATION OF STRIPPINGS, COMPLETE IN PLACE	LF	850	\$5.00	\$4,250.00
10.	TURF ESTABLISHMENT OF SEDIMENTATION BASIN AND SWALES, INCLUDES SEEDING, MOWING AND WATERING TO ACHIEVE 90% HOMOGENOUS VEGETATION TO ACCEPT PROJECT FOR FINAL PAYMENT, COMPLETE IN PLACE	AC	2	\$2,450.00	\$4,900.00
11.	TURF ESTABLISHMENT OF CLEARED AREAS, INCLUDES SEEDING, MOWING AND WATERING TO ACHIEVE 90% HOMOGENOUS VEGETATION TO ACCEPT PROJECT FOR FINAL PAYMENT, COMPLETE IN PLACE	AC	113	\$550.00	\$62,150.00
12.	INSTALL, MAINTAIN, AND REMOVE ROCK FILTER DAM, TYPE 2, COMPLETE IN PLACE	EA	3	\$3,200.00	\$9,600.00
13.	REMOVAL AND OFFSITE DISPOSAL OF EXISTING OVERHEAD ELECTRIC, INCLUDES REMOVAL OF POLES, POWER LINE, TRANSFORMER, METERS, COORDINATION WITH SAM HOUSTON ELECTRICAL CO-OP, COMPLETE IN PLACE	LF	1500	\$2.00	\$3,000.00
SUBTOTAL BASE BID CLEARING AND GRUBBING ITEMS				\$956,949.00	

BASE BID MISCELLANEOUS ITEMS

BID TABULATION FOR:

CONSTRUCTION OF THE PHASE 2 CLEARING AND GRUBBING TO SERVE FAULKNER RIDGE

BID OPENING DATE:
BID OPENING LOCATION:
TABULATION BY:
TABULATION DATE:
LJA JOB NO.

MONTGOMERY COUNTY MUNICIPAL UTILITY DISTRICT NO. 251
MONTGOMERY COUNTY, TEXAS
AUGUST 07, 2025
LJA ENGINEERING, INC.
E, MURPHY
AUGUST 07, 2025
0389-0001B (9.2)

5) DC CONTRACTING SERVICES, LLC					
NO.	ITEM DESCRIPTION	UNIT	QTY	UNIT COST	TOTAL
1.	INSTALL, MAINTAIN, AND REMOVE REINFORCED FILTER FABRIC FENCE (SILT BARRIER FENCING), COMPLETE IN PLACE	LF	100	\$1.50	\$150.00
2.	INSTALL, MAINTAIN, AND REMOVE STABILIZED CONSTRUCTION EXIT, AND REGRADE AREA TO MATCH FINISHED GRADE, COMPLETE IN PLACE	EA	1	\$3,350.00	\$3,350.00
3.	STORMWATER POLLUTION PREVENTION PLAN COMPLIANCE, INCLUDES CONTRACTOR'S BOOKLET, NOI AND NOT, COMPLETE IN PLACE	LS	1	\$6,500.00	\$6,500.00
4.	DEWATERING (GROUNDWATER CONTROL) TO COMPLETE THE CONSTRUCTION OF THE SEDIMENTATION BASIN AND SWALES, INCLUDES CONVENTIONAL ACUUM-TYPE WELL POINTS, INTERNAL SUMPS AND PUMPS OR ANY TIME OF PUMPING NECESSARY TO COMPLETE THE CONSTRUCTION OF THE PROJECT, TO BE USED AT THE WRITTEN DIRECTION OF THE ENGINEER, COMPLETE IN PLACE	AC	2	\$7,500.00	\$15,000.00
5.	SURFACE WATER CONTROL, INCLUDES PUMPING REQUIRED TO COMPLETE THE CONSTRUCTION OF THE PROJECT, TO BE USED AT THE WRITTEN DIRECTION OF THE ENGINEER, COMPLETE IN PLACE	LS	1	\$5,500.00	\$5,500.00
6.	TEMPORARY TRAFFIC CONTROL PLAN, COMPLETE IN PLACE	LS	1	\$3,500.00	\$3,500.00
7.	INSTALL, MAINTAIN AND REMOVE CONCRETE TRUCK WASHOUT AREA, COMPLETE IN PLACE	LS	1	\$650.00	\$650.00
SUBTOTAL BASE BID MISCELLANEOUS ITEMS					\$34,650.00
ALTERNATE ITEM NO. 1 CLEARING AND GRUBBING ITEMS					
1.	CHIPPING AND OFFSITE DISPOSAL OF CLEARED AND GRUBBED MATERIAL, IN LIEU OF CLEARING AND GRUBBING ITEM NO. 2, COMPLETE IN PLACE	AC	113	\$4,750.00	\$536,750.00
SUBTOTAL ALTERNATE ITEM NO. 1 CLEARING AND GRUBBING ITEMS					\$536,750.00
BID SUMMARY					
BASE BID CLEARING AND GRUBBING ITEMS					\$956,949.00
BASE BID MISCELLANEOUS ITEMS					\$34,650.00
TOTAL AMOUNT BASE BID					\$991,599.00
ALTERNATE ITEM NO. 1					
TOTAL AMOUNT BASE BID					\$991,599.00
DEDUCT CLEARING AND GRUBBING ITEMS ITEM NO. 2					-\$223,175.00
CLEARING AND GRUBBING ITEMS					\$536,750.00
TOTAL ALTERNATE ITEM NO. 1 PLUS BASE BID					\$1,305,174.00